

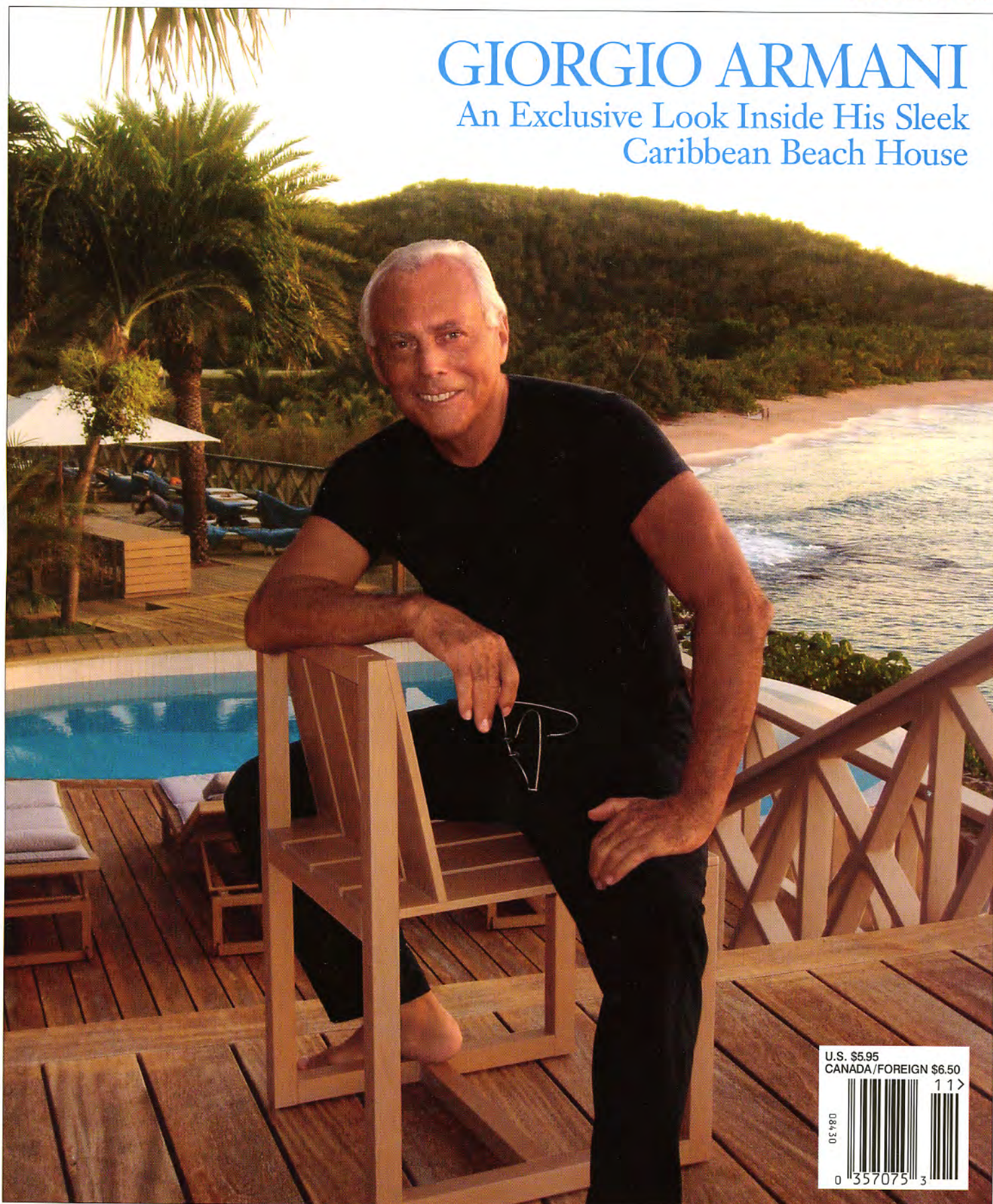
# ARCHITECTURAL DIGEST

THE INTERNATIONAL MAGAZINE OF DESIGN

NOVEMBER 2006

## GIORGIO ARMANI

An Exclusive Look Inside His Sleek  
Caribbean Beach House



U.S. \$5.95  
CANADA/FOREIGN \$6.50







## Guiding Light

**R**obert Truax has assembled a stellar team of lighting professionals who work with designers, such as **Paul Vincent Wiseman**, to conceive and fabricate custom lighting. Truax (left, with Wiseman, right, comparing the sketched design to a completed sconce) also creates lighting environments and elaborate control systems.

Truax Design Group  
418 Petaluma Ave.  
Sebastopol, CA 95472  
707-829-8188  
[www.truaxdesign.com](http://www.truaxdesign.com)



## Partners in Design

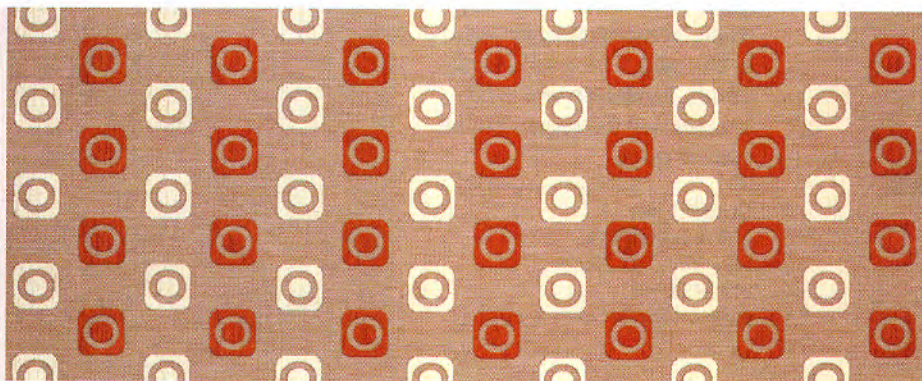
**Thomas W. Newman's** traditional furniture receives an added dimension from a new partnership with Paris-trained **Antoine Schapira**, whose approach is more contemporary. Among the results: a Biedermeier-style table (left) of Catskill cherrywood hand-picked by Newman and a rosewood credenza (right).

Amourette & Newman  
225 Garden St., Hoboken, NJ 07030; 201-963-9108  
[www.thomaswnewman.com](http://www.thomaswnewman.com)



## JAB Elements

The German company JAB (718-706-7000) has introduced a fabric called *Elements*. The pattern evokes a 1950s feeling with a geometric circle-inside-a-square motif and is available in six colors.



TRUAX DESIGN GROUP: CHRISTOPHER IRON; AMOURETTE & NEWMAN: COURTESY THOMAS W. NEWMAN, CABINETMAKER; JAB: ANTHONY GUINHA